

Ms. Cooper's Class

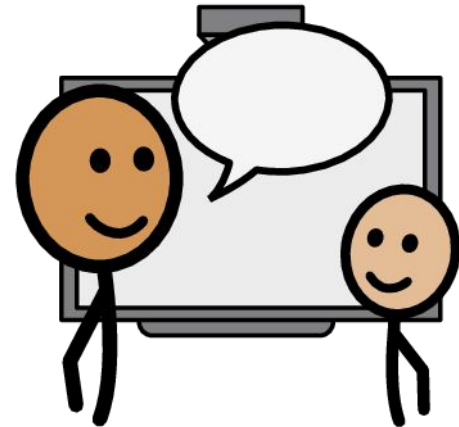


SLC-SEB Classroom

What Does SLC-SEB Mean?

SLC stands for Supported Learning Classroom

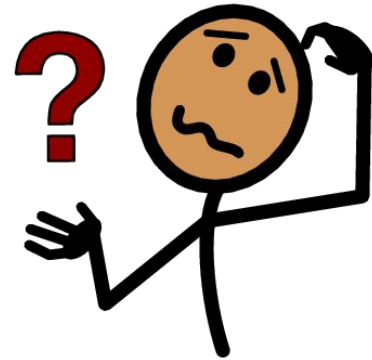
This means that students are placed in a smaller classroom like Ms. Cooper's to receive more small group and 1:1 supports from Ms. Laurie and the two classroom assistants: Ms. Moore and Mrs. Epley to help them join their grade level class



What Does SLC-SEB Mean?

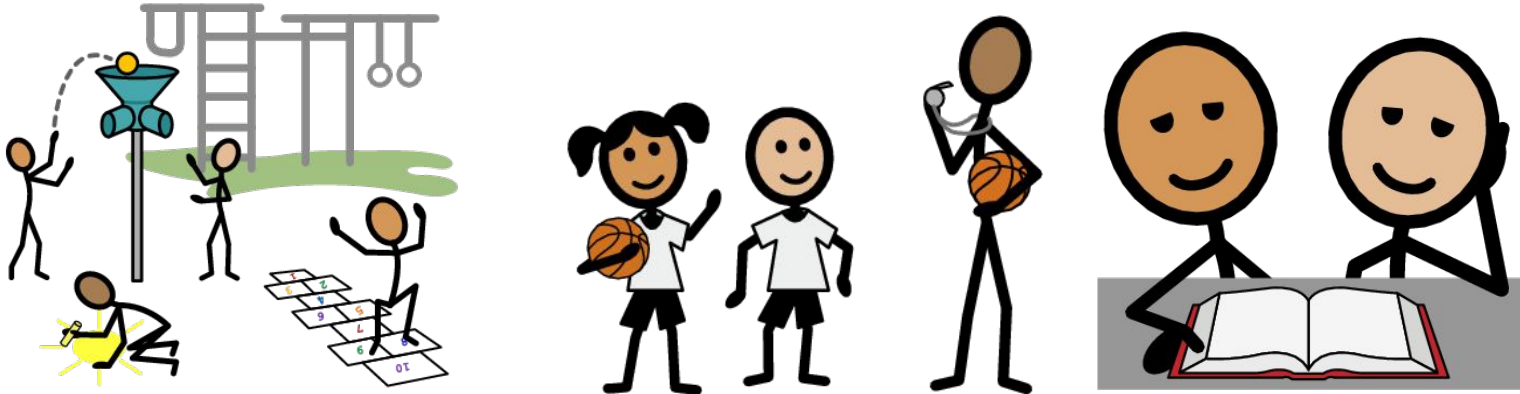
SEB stands for Social Emotional Behavior

This means that the skills focused on in this class are centered around social skills (hanging out and communicating with friends) and how to handle problems



What if a student from Ms. Cooper's class joins my class?

Sometimes, students from Ms. Cooper's class join their grade level class. If you see them, treat them as any other friend in your class. They are there to learn, just like you! Be a good friend and help them if they need it. Offer to play with them during recess or specials!



Meet The Classroom Team



Ms. Cooper
Classroom Teacher



Mrs. Epley
Classroom assistant



Ms. Moore
Classroom assistant

Who Else Supports?

These are people you may see working with a student from Ms. Cooper's class throughout the school



Mr. Soule
Principal

Mrs. B
Assistant Principal



Mr. Betker
School Counselor



Mrs. Ramert
Behavior Specialist

Hall Closings

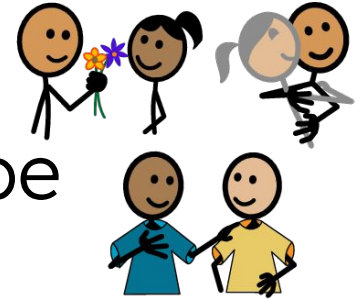


Sometimes, there is a need to close a hallway. There will be a sign that says “HALL CLOSED” Please follow teacher instructions and go a different way

Be KIND!



- You never know what someone is going through outside of school
- Treat others the way you want to be treated
- Being kind helps you make friends
- Don't talk about others when they are not there



At Cherry Park...



We are all part of a community, we treat others the way we want to be treated and acknowledge and love each other's differences.

